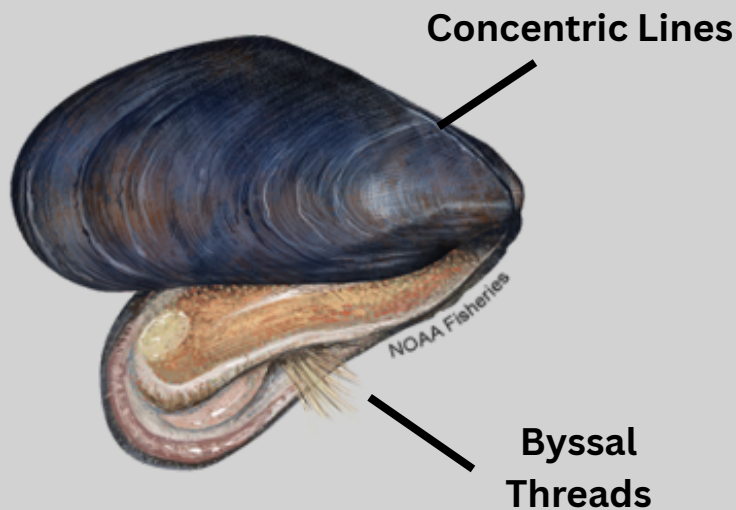


Mytilus edulis

Blue Mussels

Native to Maine

Key Identifying Characteristics



Exterior color: black, blue-black, or brown

Shape: teardrop-shaped

Texture: smooth

Concentric lines: natural growth rings mark the exterior of the shell

Interior color: white or purplish, shiny

Byssal threads: the 'beard' which allows the mussel to attach to the substrate

Length: 2-4 inches at maturity, but can grow up to 8 inches

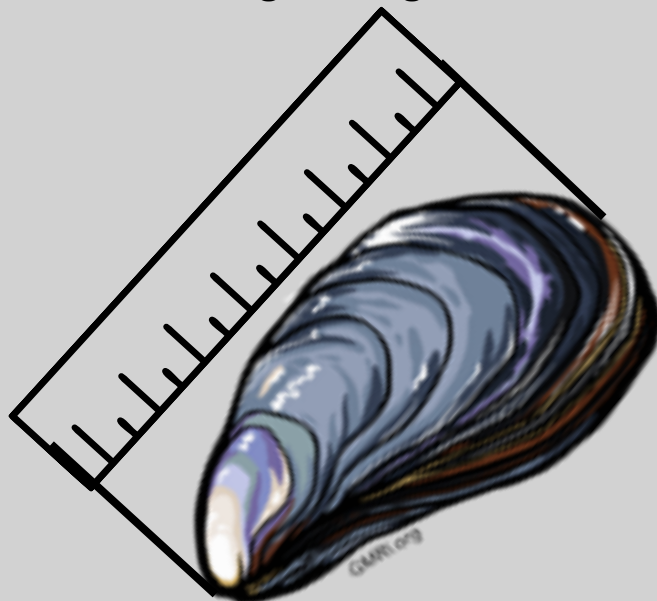
Juvenile Mussels

Small mussels (also known as seed or spat) that settle onto natural substrates as shown in the image, or artificial substrates such as rope.



Measuring Mussels

Use a ruler to measure the longest distance from edge to edge of the shell.



Common Predators to Blue Mussels



European Green Crab: varying colors and sizes; characterized by pentagon shaped shell and 5 spines.



Eider Duck: large duck that can be white and black or brown with a sloping bill.



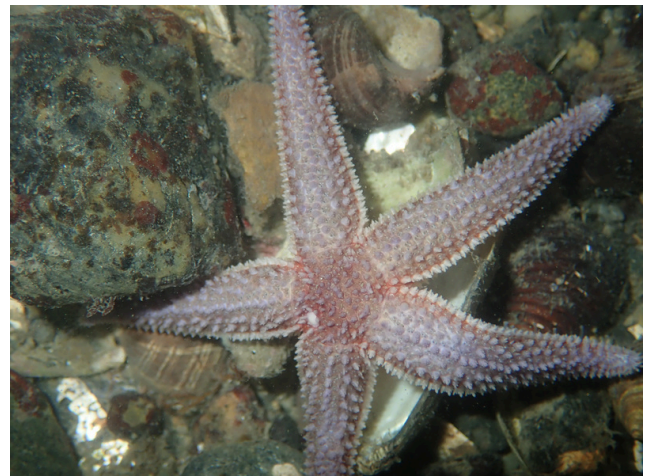
Asian Shore Crab: tend to be smaller crabs with striped legs and white underside.



Whelk: medium sized univalve with spiral ridged shell and soft body.



Blue Crab: larger crab with olive-green body and blue claws.



Sea Star: sea invertebrates with five arms, typically found in tide pools.